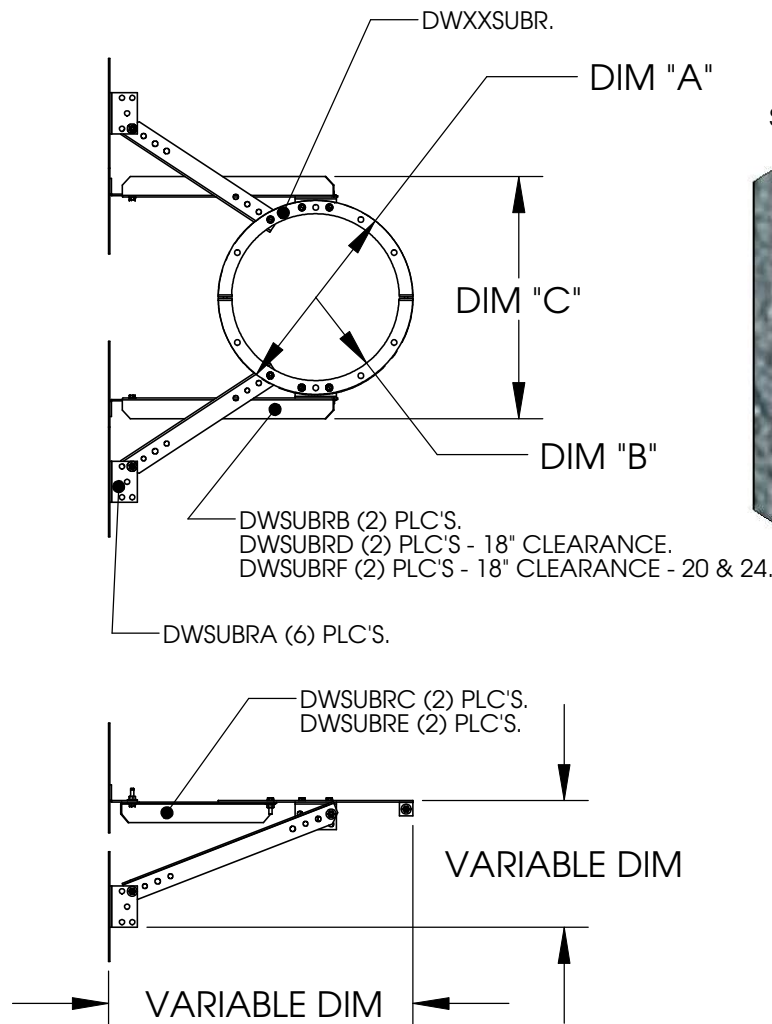


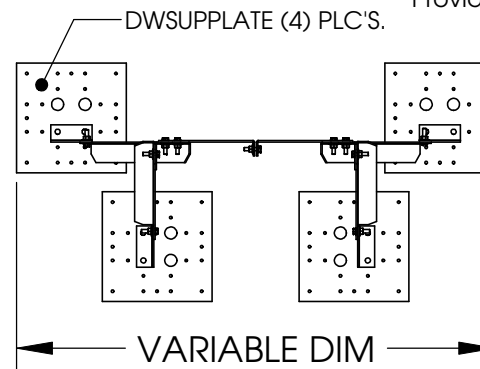
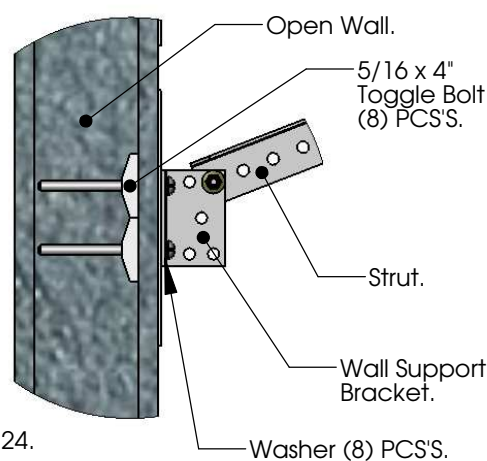
DUCT INFORMATION TABLE					
Duct Diameter	DIM "A"	DIM "B"	DIM "C"	Part Number	Part Number
8"	10.194	4.099	13.694	DW08VESU	DW08VESU18
10"	12.194	5.099	15.694	DW10VESU	DW10VESU18
12"	14.194	6.099	17.694	DW12VESU	DW12VESU18
14"	16.194	7.099	19.694	DW14VESU	DW14VESU18
16"	18.194	8.099	21.694	DW16VESU	DW16VESU18
18"	20.194	9.099	23.694	DW18VESU	DW18VESU18
20"	22.194	10.099	25.694	DW20VESU	DW20VESU18
24"	26.194	12.099	29.694	DW24VESU	DW24VESU18

Revision History				
#	Description	Revised by	ECN#	Date
0	Released to production	N Perry	229	2/19/07
1	Added 18" Clearance Brackets	N Perry	1367	5/8/08
2	Changed to steel zinc coating	N Perry	1505	11/17/08
3	Added DWSUBRF For 20 & 24 Duct	N Perry	1856	1/7/10
4	Added Support Plate	N Perry	1845	2/9/10

Uninsulated duct must be 18" from combustible surface.



DETAIL A
SCALE 1 : 6

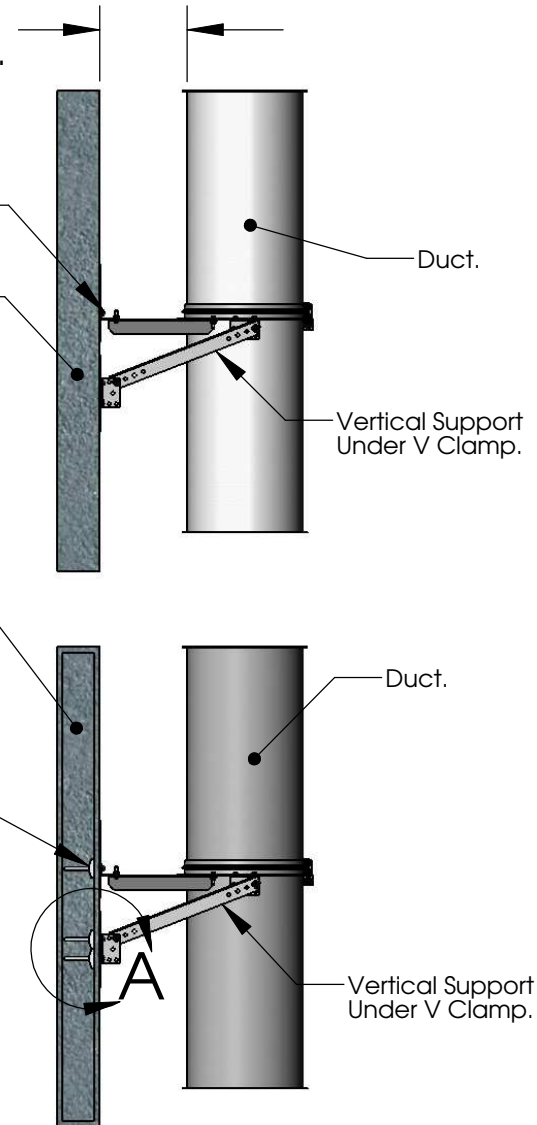


5/16 - 18
Mounting Hardware
Supplied By Others.

Solid Wall.

Open Wall.

5/16 x 4" Long
Toggle Bolts Are
Used To Secure
Support To Open
Walls, Hardware
Provided.



Material: 12 GA Steel Zinc Coated
Blank Size: N/A x N/A
Weight: See Above lbs

Part Number: See Above
MACOLA Number: See Above
Drawing Name: Duct Details
Drawn By: N Perry
Parent Assembly: Duct Project
Sheet: 3 of 9

Unless Otherwise Specified
Dimensions are in Inches.

Standard Tolerances are:
Fractions: $\pm 1/16$
Decimal: $.XX \pm .05$
 $.XXX \pm .015$
Angles: $\pm 1^\circ$

CONFIDENTIAL